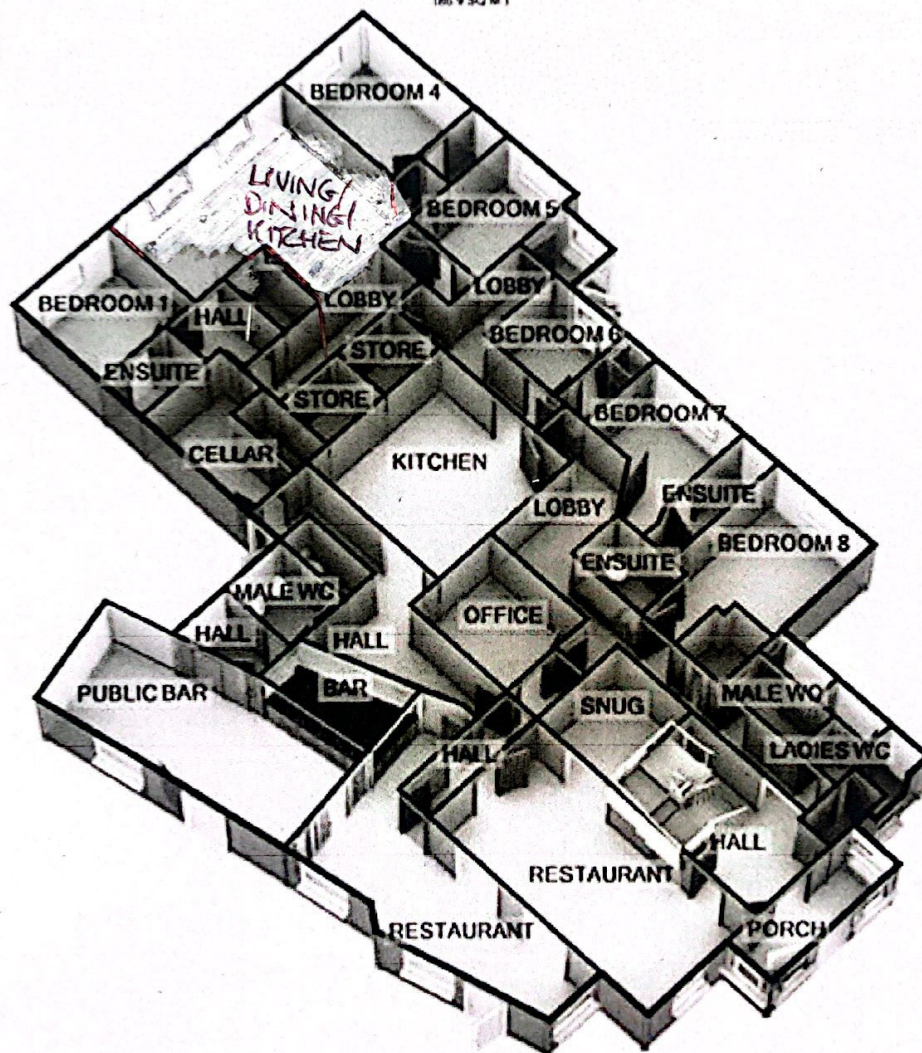


1ST FLOOR
APPROX. FLOOR
AREA 935 SQ.FT.
(86.9 SQ.M.)



GROUND FLOOR
APPROX. FLOOR
AREA 3545 SQ.FT.
(329.3 SQ.M.)

MACDONALD ARMS HOTEL, MAIN STREET, BALBEGGIE, PERTSHIRE, PH2 6EU
TOTAL APPROX. FLOOR AREA 4480 SQ.FT. (416.2 SQ.M.)

For illustrative purposes only. Decorative finishes, fixtures, fittings and furnishings do not represent the current state of the property. Measurements are approximate. Not to scale
Made with Metropix ©2016